

### DUAL SLURRY AIR RELEASE VALVE



#### FEATURES

- No sticking due to rotating ball.
- No blocking or leakage.
- Natural rubber secondary seal for positive seal.
- Fabricated and can be repaired in line.
- Self cleaning ball action.
- Cast body or fabricated.



**DUAL's** Air/Vacuum Release and Vacuum Breaker's function is to automatically exhaust large volumes of air from the system when it is being filled and also to allow air to re-enter the pipe line when being emptied. The orifice size is generally the same size as the valve inlet and outlet.

In Operation, when the system is filled, the fluid lifts the ball until it closes the orifice. The orifice will remain closed until the system is emptied. Air may enter the valve and displace the fluid while the system is in operation, however, internal pressure will continue to hold the valve closed. The valve will not re-open until the system pressure drops to near atmospheric pressure and the ball is no longer buoyant.

#### PRODUCT SPECIFICATION

**SIZE RANGE:** 50mm to 200mm.  
Larger sizes on request.

**OPERATING TEMPERATURES:** Operating temperatures to 80°C. Higher conditions are possible if the valve is constructed from suitable materials.

**VALVE HOUSING:** Valve housing is Cast SG Iron, fabricated Carbon Steel or Stainless Steel (304 or 316).

**PRESSURE RATING:** Working pressure standards are 10 up to 160 Bar for Air Release Valves, and up to 25 Bar for combination valves for use of slurries.

**LINING:** Valve housing can be epoxy coated or natural rubber lined. A range of elastomer grades are available for corrosive duties.

**BALL:** Guided HDPE floating ball, solid Urethane or hollow Stainless Steel for high pressure.

**VALVE SEAT:** Natural Rubber or Stainless Steel (304 or 316).

**DRILLING PATTERNS:** ANSI B16.5, DIN, SABS & BS optional.

**MATERIAL CERTIFICATION:** Certified chemical and physical test reports can be supplied.

## HOW THE DUAL VENT VACUUM BREAKER WORKS

Automatically releases air from the pipeline when filled and stops air from entering the pipeline when emptied.

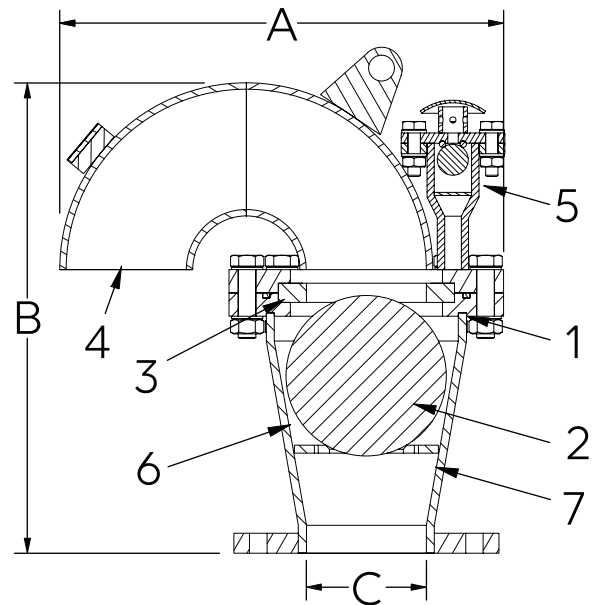
### APPLICATIONS

- Slurry pipelines.
- Deep well pumping.
- Waterlines.
- Sewage.
- Pump suction.
- Pump discharge.

### VENT ONLY DUAL VACUUM BREAKER



### BOTTOM ASH APPLICATION



### DIMENSIONS AND WEIGHTS

VALVE SIZE (mm)	2" 50mm	3" 80mm	4" 100mm	6" 150mm	8" 200mm
A	299	387	422	587	714
B	285	402	437	554	711
C	50	80	100	150	200
WEIGHT (kg)	25	35	35	70	90

Contact Dual for larger sizes. Dimensions and weights are for guidance only - detailed dimension drawings available on request. All dimensions are in millimeters, unless stated.

PART	DESCRIPTION
1	Body Carbon, Cast or Stainless Steel
2	Ball HDPE, Urethane or Stainless Steel
3	Seat Stainless Steel, Urethane or Natural Black Rubber
4	Air Vent Carbon or Stainless Steel
5	Secondary ARV Reinforced Nylon with Rubber or EPDM Seal
6	Ball Guides Carbon or Stainless Steel
7	Lining Optional



CORPORATE HEADQUARTERS:  
166 ROTTERDAM ROAD  
(CNR ROTTERDAM ROAD & ANTWERP STREET)  
APEX, BENONI, GAUTENG, SOUTH AFRICA

PO BOX 12520, BENORYN 1540  
TEL: +27 11 422 4326/7  
FAX: +27 11 421 7842  
EMAIL: SALES@DUALVALVES.COM



DSARV